

# μSQUAREMAN

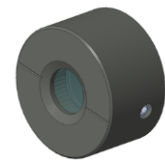
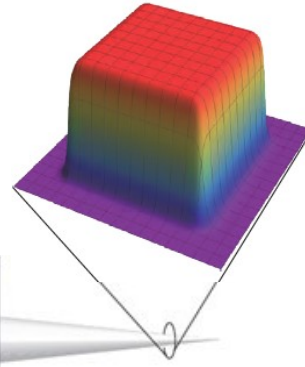
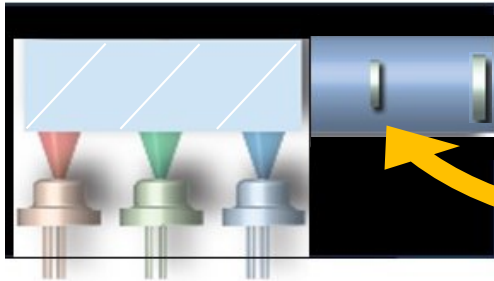


μSQUAREMAN is a square-top hat laser module that achieves illumination uniformity in a fine area.

[Single light source]



[Multi light source]



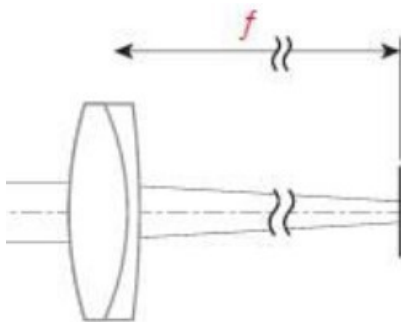
**μ-Square Beam Shaper**



## [Electrical and Optical Characteristics]

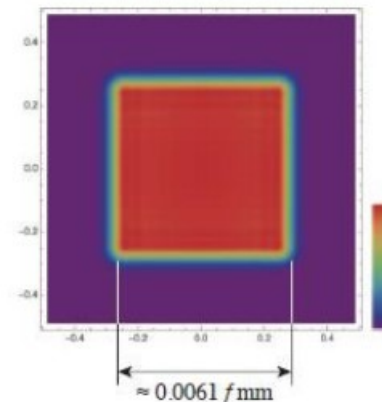
Item	Spec	Remarks
Wavelength Range	360~1300 nm	
Focal Length		*Depends on converging lens Refer to the below
Length of a side		*Depends on converging lens Refer to the below
Aspect ratio	1.0	
Line uniformity (CV)	< 0.15	CV = $\sigma$ (std.) / $x$ (ave.)
Operating voltage		*Depends on the spec of the laser used
Operating Current		*Depends on the spec of the laser used

Converging lens with focal length  $f$



Light output profile

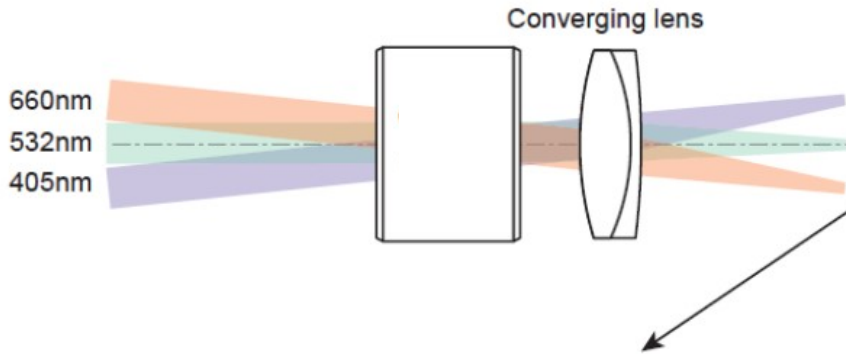
FWHM width  $\approx 0.0061 f$  mm  
note: FWHM is independent from  $\lambda$





[Example of spec] \*Designed for biomedical application

Item	Spec	Remarks
Focal length of converging lens	100 mm	
Length of one side	600 μm	FWHM
Aspect ratio	1.0	



Relative intensity profiles for typical wavelength, in the case of  $f = 100\text{mm}$

